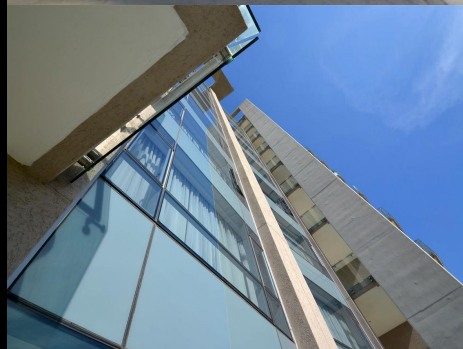


6639

Crane Street
Metropolis on Park



Barry Scott-Brown

Non-Principal Property
Practitioner
Registered with PPRA

082 777 2552
barry@lwp.co.za

LWP

PROPERTIES

011 468 5900 www.lwp.co.za

Whilst every care has been taken in the preparation of this listing, we cannot be held responsible for any errors or omissions which may occur.

LUXURY LIVING AT IT'S FINEST IN THIS UPMARKET, BEAUTIFUL APARTMENT!

WEB REF: RL965

R5,060,000

FLOOR SIZE: 133m²

LEVIES: R5,209



2



2

This spacious single storey breath-taking apartment, overlooks Mushroom Farm Park in the heart of Sandton - well known for being "The Richest Square Mile in Africa".

As you enter this GLH Architects and Associates designed home, you are greeted with the epitome of elegance and class - a portrait of Sandton's luxury and style. Stunning state-of-the-art kitchen fully equipped with Miele appliances, built-in fridge, Caesarstone countertops and a breakfast nook. Seamlessly flowing into the open plan dining room and lounge, all of this opening out onto the covered patio - enjoy sundowners while you entertain in style on your private terrace.

Two deluxe generous bedrooms all en-suite. The master suite with full bathroom, offers perfect sunset views which is an absolute must see!

Sophisticated ceiling detail, wooden vinyl and Oogie hardwood flooring, picturesque double-glazed East and West facing windows, a full standby electrical and reserve water tanks, Hansgrohe fittings, 2 private parking bays all speak of the high-end cosmopolitan living that this apartment offers.

The Metropolis on Park amenities include; a ground floor cafe and restaurant, meeting rooms, private dining suites, laundry pick-up, running track, fully equipped outdoor gym, children's play area as well as 24-hour security with electronic access- easy living at its finest!

Don't Delay, enquire today! This won't be available for long...

Book your private viewing today.

Whilst every care has been taken in the preparation of this listing, we cannot be held responsible for any errors/ omissions which may occur
2 private parking bays

Scenic View

