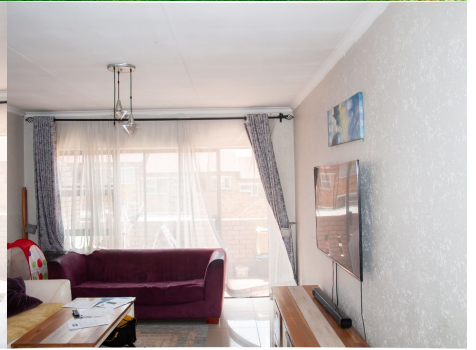


2

Fife Street
Noon's Place



Lolitha Nongqotho

Candidate Property Practitioner
Registered with PPRA

071 792 2603
lolitha@lwp.co.za

Hopeful Chakanyuka

Candidate Property Practitioner
Registered with PPRA

073 508 3357
hope@lwp.co.za

LWP
PROPERTIES

WEB REF: RL4670

ERF SIZE: 63m²

FLOOR SIZE: 63m²

RATES AND TAXES: R559

LEVIES: R1,471



RED HOT PROPERTY ALERT!

R670,000

Priced to Sell!

Buyers seeking an exceptional opportunity!

Between R600,000 and R670,000 to view and negotiate!

Stunning Apartment for Sale!

Features:

Open-plan dining area

Main bedroom with built-in units

Modern shower and toilet

Granite tops and 4-plate stove

Convenient washing machine space

Don't miss out! Contact us to schedule a viewing!

24-hour guarded and secure guardhouse – unmatched location, close to Woodmead Shopping Centre, Exclusive Montessori and Buccleuch Primary Schools and it's only 10 minute drive from popular Sandton City

Hurry – Priced to sell today!!! Don't miss a fantastic investment opportunity!!

Whilst every care has been taken in the preparation of this listing, we cannot be held responsible for any errors/ omissions that may occur.

