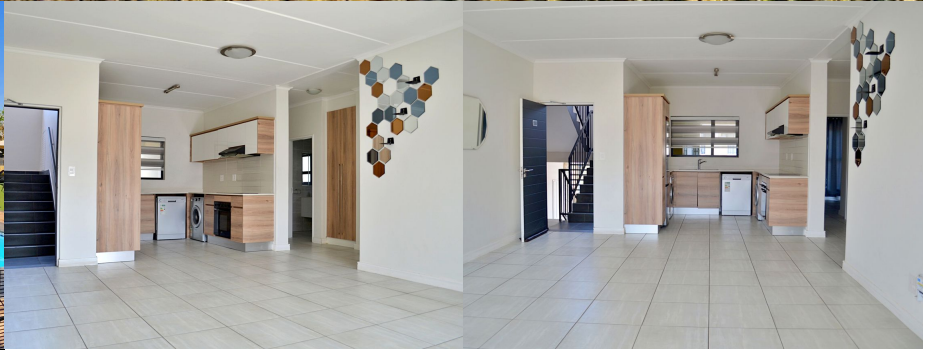


1

Maxwell road *Kikuyu Estate*



Alma Brown

Candidate Property Practitioner
Registered with PPRA

083 947 2726
alma@lwp.co.za

Barry Scott-Brown

Non-Principal Property
Practitioner
Registered with PPRA

082 777 2552
barry@lwp.co.za

LWP

PROPERTIES

WEB REF: RL4279

ERF SIZE: 110m²

FLOOR SIZE: 110m²

RATES AND TAXES: R1,373

LEVIES: R2,488



2



2



REDUCED

R1,399,000

Stunning Two-Bedroom Apartment in Kikuyu Waterfall Estate

Now is your chance to own this amazing property in the heart of Kikuyu Waterfall Estate, This two-bedroom apartment is designed with modern living in mind.

Perfect as an investment unit for rental too.

Apartment Features:

Wi-Fi Ready: Stay connected with high-speed internet access.

Scandinavian-Style Kitchen: Sleek, modern kitchen with quality Defy appliances, including a dishwasher, washing machine, tumble dryer, electric stove top, hob, and oven. Features a double washup sink and ample soft-close cabinets for all your storage needs.

Balcony: Enjoy your morning coffee or evening relaxation on your private balcony with stunning views over the Waterfall Skyline.

Solar-Supplemented Electricity: Eco-friendly energy solutions to help reduce your carbon footprint.

Smart Utility Meters: Keep track of your utility usage with ease.

Interior Layout:

Generous Lounge and Open Plan Kitchen: The tiled flooring throughout adds a touch of elegance to the spacious lounge and dining areas, which flow seamlessly to the balcony.

Main Bedroom: Fitted with built-in cupboards and access to the balcony via a glass slider, the main bedroom provides a perfect retreat. Includes an ensuite bathroom with a shower, loo, and basin.

Additional Bedroom: The additional bedroom, also with built in cupboards and entertainments areas share a full bathroom featuring a deep soaking tub, ideal for relaxation.

Additional Amenities:

Parking: Two designated covered parking bays located close to the unit for your convenience.

Secure Estate: Access control gatehouse, ensuring peace of mind.

Residents-Only Park: A private park for estate residents.

Running Track: Scenic running track around a water featured dam for