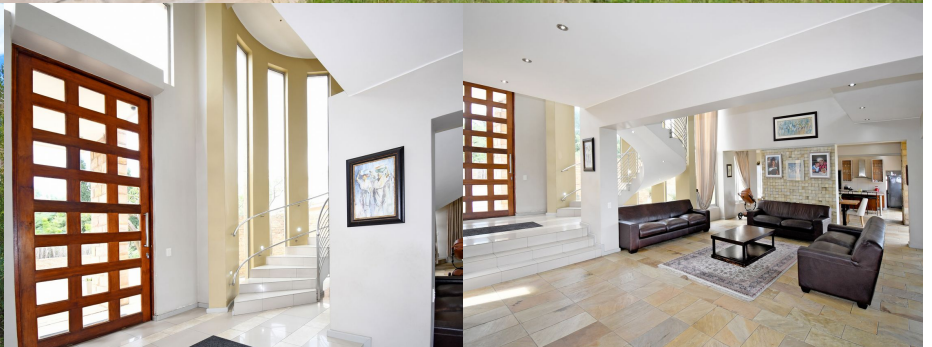


43

Saddlebrook Drive



Barry Scott-Brown

Non-Principal Property
Practitioner
Registered with PPRA

082 777 2552
barry@lwp.co.za

Aspen Sanders

Non-Principal Property
Practitioner
Registered with PPRA

083 210 9488
aspen@lwp.co.za

LWP
PROPERTIES

UNPARALLELED SENSE OF SPACE, LIGHT, AND TRANQUILITY

WEB REF: RL4613

R9,300,000

ERF SIZE: 10,251m²

FLOOR SIZE: 583m²

RATES AND TAXES: R4,943

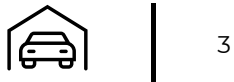
LEVIES: R8,000



4



4



3

Designed for modern luxury living, the home boasts double-volume ceilings, expansive stack away doors, and seamless indoor-outdoor integration, making the most of its breathtaking natural surroundings.

From the moment you step inside, you are welcomed by grand open-plan living areas, bathed in natural light. A sleek, gourmet kitchen flows effortlessly into the dining and lounge areas, all opening onto a sprawling enclosed patio with a built in braai and prep bowl, overlooking the gardens and pool. Kitchen boasts a centre island, gas hob, stacker doors to the pool, walk in pantry and large separate scullery.

Separate tv room - perfect spot for movie nights or chill time.

4 deluxe size bedrooms and 4 bathrooms. One bedroom located downstairs with outside access - ideal spot for visitors. Generous master suite boasts magical views, balcony, walk-in-closet and a divine full en suite bathroom.

Upstairs pajama lounge with outside terrace space over looking Johannesburg - great spot for a sundowner or your morning coffee.

Triple garage, staff accommodation, boma with fire pit and more!

Whilst every care has been taken in the preparation of this listing, we cannot be held responsible for any errors/ omissions that may occur.

