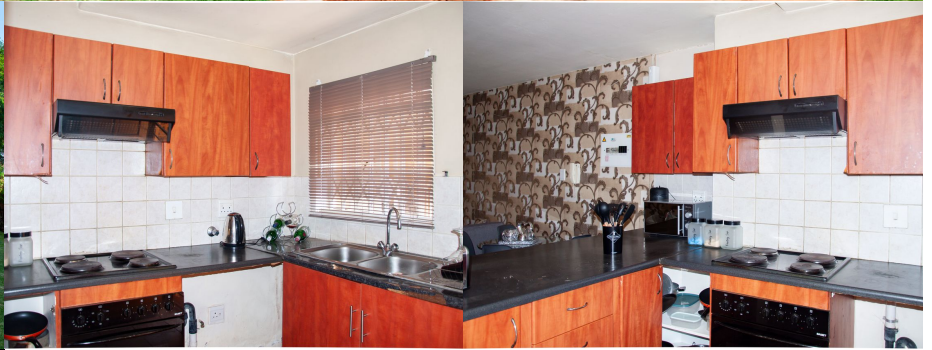


6

Invicta Road
Villeroy Court



Rookaya Gregory

Assistant

079 623 5759

rookaya@lwp.co.za

Barry Scott-Brown

Non-Principal Property
Practitioner

Registered with PPRA

082 777 2552

barry@lwp.co.za

LWP
PROPERTIES

011 468 5900 www.lwp.co.za

Whilst every care has been taken in the preparation of this listing, we cannot be held responsible for any errors or omissions which may occur.

2BED GROUND FLOOR UNIT

WEB REF: RL4519

R830,000

ERF SIZE: 102m²

FLOOR SIZE: 92m²

RATES AND TAXES: R583

LEVIES: R1,984



This lovely ground floor apartment, in Villeroy Court, located in Halfway Gardens is the perfect apartment for professionals and families alike or someone looking to retire in a private space.

The lounge leads onto a private, gated garden just behind the locked garage, perfect for private entertainment or outdoor relaxation and play.

The separate kitchen has ample cupboards space, can fit a single fridge and 1 wet under counter appliance.

The bedrooms both have built-in cupboards, with the main bedroom featuring an ensuite with a shower. The second bedroom is conveniently located next to the shared bathroom, which features a tub.

The complex has a communal pool and braai facilities, it also has 24hr security.

With easy access to New road, you are able to access shopping centers, the gym and other amenities via the highway.

Whilst every care has been taken in the preparation of this listing, we cannot be held responsible for any errors or omissions that may occur.

