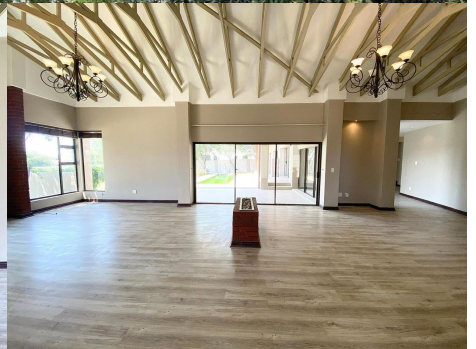


6446

Pebble Beach Street
Copperleaf Golf Estate



Barry Scott-Brown

Non-Principal Property
Practitioner
Registered with PPRA

082 777 2552
barry@lwp.co.za

Paul Kleanthous

Candidate Property Practitioner
Registered with PPRA

083 239 8983
paul@lwp.co.za

LWP

PROPERTIES

LARGE FAMILY HOME IN SOUGHT-AFTER COPPERLEAF GOLF ESTATE

WEB REF: RL839

R3,850,000

ERF SIZE: 958m²

FLOOR SIZE: 350m²

RATES AND TAXES: R2,800

LEVIES: R2,400



3



2.5



2

Genuine seller calling all buyers from R3,600,000 to R3,850,000 to view and negotiate!!

Rolling lush lawns, beautifully manicured garden, sparkling pool - you will want to spend more time outside than in!

3 large north facing bedrooms all opening to a sunny patio, 2 full bathrooms and 1 guest cloakroom (MES). Main bedroom with plenty of cupboard space, walk through closet and a large en-suite with separate loo.

The living area offers a spacious kitchen with light granite tops and dark wood cupboards, eat in breakfast bar, gas hob and separate scullery with space for all your appliances. Open plan to the kitchen is a huge stunning dining and family room with high double volume ceilings and a gas fireplace that opens to covered patio with a braai that overlooks the maintained pool and green pristine garden.

Double garage with extra storage space, automatic irrigation throughout garden, open plan study, staff accommodation with built in cupboards and kitchenette, fibre reticulation, guest cloakroom and plenty more....

Don't miss your opportunity to own your own slice of heaven!!

Whilst every care has been taken in the preparation of this listing, we cannot be held responsible for any errors/ omissions which may occur

