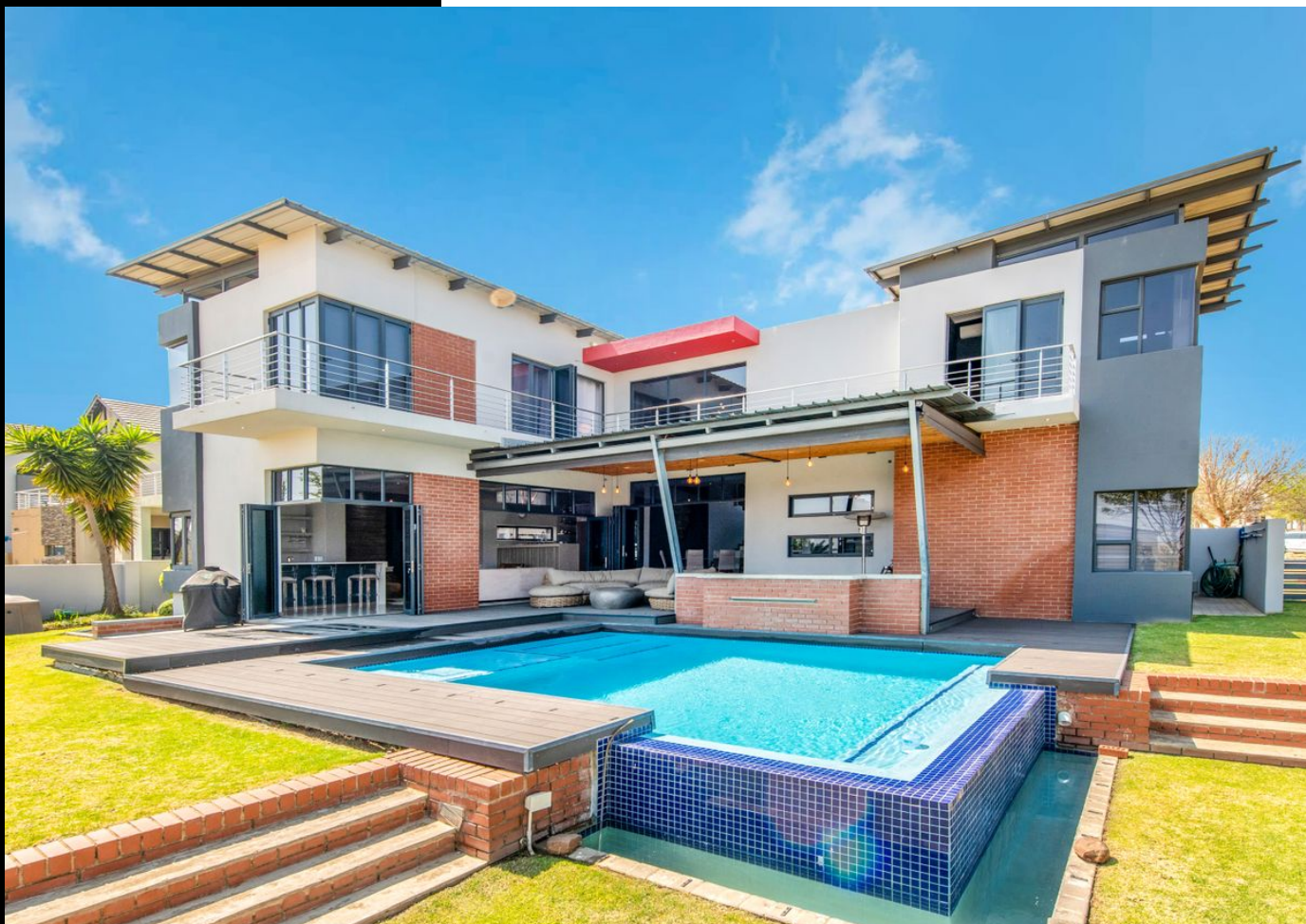


7026

Pinehurst Place
Copperleaf Golf Estate



Paul Kleanthous

Candidate Property Practitioner
Registered with PPRA

083 239 8983
paul@lwp.co.za

Barry Scott-Brown

Non-Principal Property
Practitioner
Registered with PPRA

082 777 2552
barry@lwp.co.za

LWP
PROPERTIES

EXQUISITE 3 BEDROOM HOME WITH GOLF COURSE VIEWS AND LUXURY AMENITIES

WEB REF: RL3964

R5,500,000

ERF SIZE: 903m²

FLOOR SIZE: 430m²

RATES AND TAXES: R2,900

LEVIES: R2,800



3



3.5



2

Inviting serious buyers to view and negotiate!

Welcome to your dream oasis nestled within a serene private greenbelt, boasting breathtaking views of the golf course and stunning sunsets. This exceptional property offers a perfect blend of modern elegance and resort-style living. With a generous 430m² of living space, this home features 3 bedrooms, 3.5 bathrooms, and a plethora of high-end amenities that ensure the epitome of comfort and sophistication.

As you step through the grand entrance, you'll be immediately captivated by the living spaces that are thoughtfully designed to seamlessly connect the indoors with the outdoors, enhancing the overall sense of tranquility.

The heart of the home is the fully automated living experience. Thanks to the integrated Alexa system, you'll have complete control over the lighting and audio systems, allowing you to set the perfect ambiance with just a voice command. The ceiling speakers further elevate the atmosphere, providing immersive sound throughout the living spaces.

Entertaining is a breeze with the well-appointed bar and indoor braai area, where you can host gatherings with style and flair. For those cozy evenings, the fire pit offers a serene setting to unwind and enjoy the company of friends and family.

The main bedroom is a true sanctuary, featuring a luxurious jacuzzi bathtub strategically placed to offer captivating views of the golf course. Imagine indulging in relaxation while gazing upon the rolling greens and tranquil surroundings. The property's allure is further heightened by a maid's room and a store room, offering convenience and practicality.

The kitchen is a chef's delight, with a spacious pantry and scullery that provide ample storage and workspace. Whether you're preparing a quick meal or hosting a grand dinner party, this kitchen is designed to meet your every culinary need.

An added advantage of this property is the installation of a generator, ensuring an uninterrupted power supply during any unforeseen circumstances. Moreover, approved plans from the City Council (COT) and Homeowners Association (HOA) allow for an impressive 128m² extension, offering the exciting possibility of transforming this home into a total of

